



TLS

TLS Offshore Containers International

Wherever you are in the world TLS can help you,
contact us. E-mail: sales@tls-containers.com
Telephone: +65-65637288; +65-31386967



UAE

P.O. Box 85674,
Dubai, United Arab
Emirates

Singapore

69 Ubi Road 1,
Oxley Bizhub,
Singapore, 408731

China

198 Wuzhou east
road, Yangzhou,
China

2020

- ◆ Total Investment: 405 Million (RMB)
- ◆ Total Area: 400,000 m²
- ◆ Staff: 3,000
- ◆ Engineers: 200
- ◆ Annual Revenue: 2-3 Billion (RMB)



◆ Main products:



■ Modular Building



■ Logistic Equipment Container



■ R eeper Container



■ Containerized Integration

Certification

TLS adheres to strict quality control and continuous innovation. With more than 20 years development, we attained ISO certificaitions, third party factory approvals, specific product & operator certificates, as well as various awards and patents issued by various levels of government and related associations.



ISO 9001



ISO 14001



OHSAS 18001



CE-EN1090



ABS Factory Approval

Awards



Standards Compliance

Experts for

- ◆ Structure
- ◆ Insulation
- ◆ Plumbing
- ◆ Electrical
- ◆ Suite

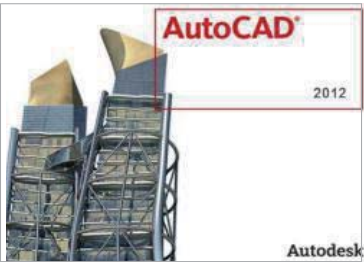


Structural	
Chinese GB	CSA G40.20 / 21-04
AWS D1.1	AS / NZS 1170.2
ANSI / AWS A2.4	AS / NZS 1554
BS EN ISO 15607	AS / NZS 2589
BS EN ISO 23278	AS 4100
EN 895	ISO 15614
EN 1291	JB 4708
EN 1090-1	JGJ81
EN ISO 15609	AWS-D15.1
DIN EN ISO 5817	CSA W59-03 (R2008)

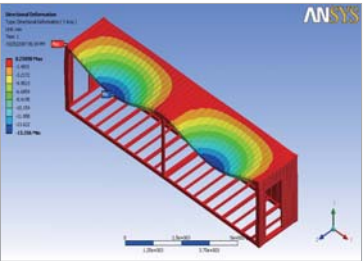
Electrical			
AS 4508	AS / NZS 3000	AS / NZS 3008	IEC 60898-1
AS 1670	AS / NZS 1668	AS / NZS 3013	IEC 61008-1
AS 2293	AS / NZS 1768	AS / NZS 1276	IEC 61643-1
AS 1668	AS / NZS 2293	AS / NZS 1571	IEC 60947-3
AS 1851	AS / NZS 2381	AS / NZS 3760	CEC 2012
AS 2665	CSA C22.1	AS / NZS 3947	Chinese GB
UL719	CSA C22.2 / 3	IEC 60364	JGJ 16-2008
UL197	EN60670-1	EN61009-1	EN80898-1

Explosion-proof				
DNV2.7-1	A-60 fire rating	Zone 1 of flammable gas hazardous atmosphere	Explosion-proof grade: Ex P IIBT3(+50-+120 Pa)	Air pressurization tests compatible with IEC60079-13

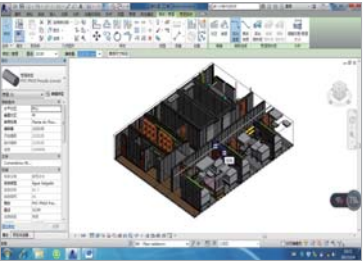
R&D



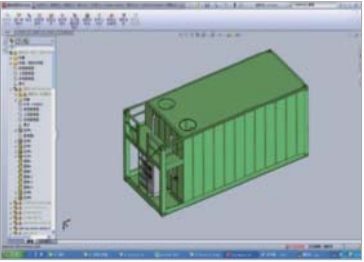
■ Auto CAD [Drawing]



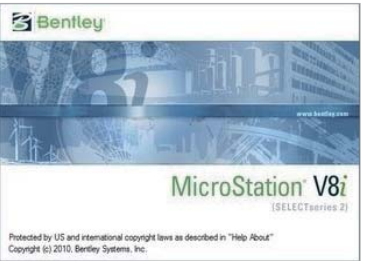
■ ANSYS [Finite Element Analysis]



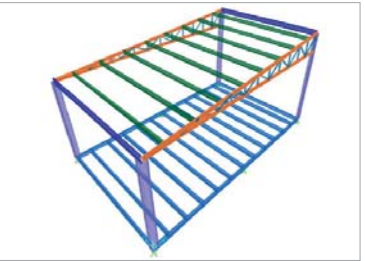
■ Building Information Modeling [BIM]



■ Pro-Engineer [3D Design]



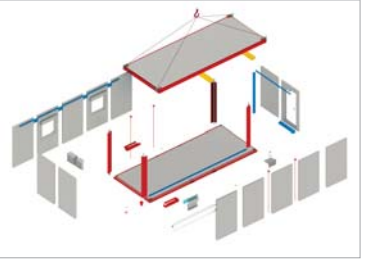
■ Micro Station [Drawing]



■ 3D3S [Steel Structure Calculation]



■ 3DS Max [3D Design]



■ Solid Works [Modeling]

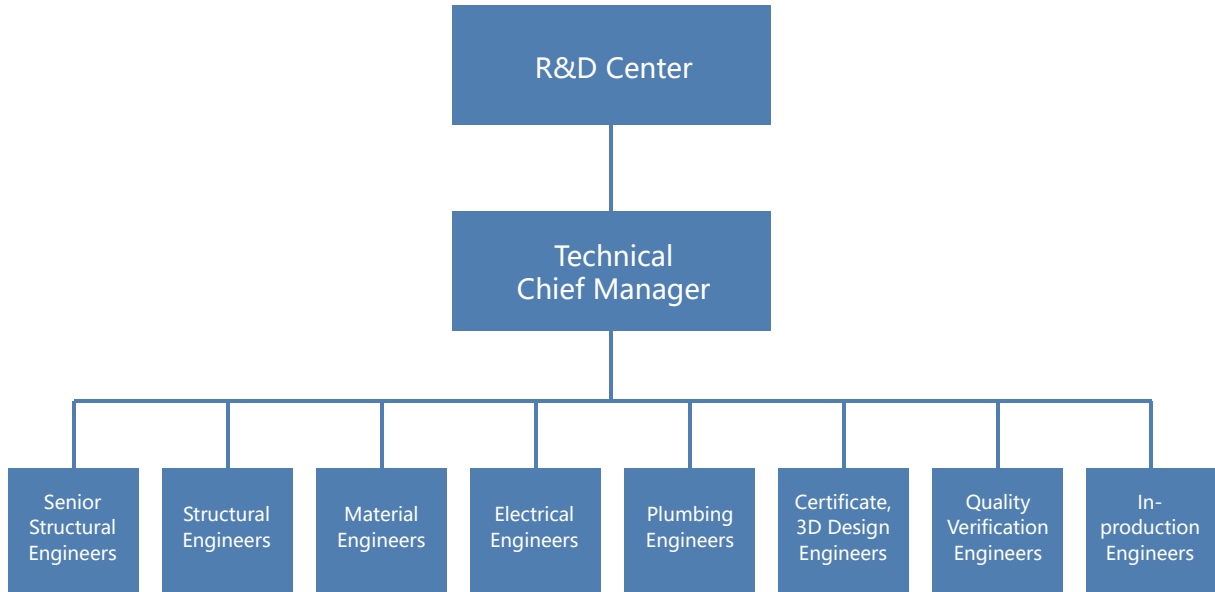
- ◆ Whatever your requirements, we provide customized service. With 20+ years' industry experience, we offer world-class and life long technical support from the beginning of the project to after-sales maintenance.
- ◆ Our engineering team consists of professional structural, electrical, plumbing, material, 3D design and quality verification technicians, capable of finalizing multiple drawings, specifications, data sheets, calculations, 3D pictures etc. to your requirements.

Key Factor for

- ◆ Temperature
- ◆ Relative Humidity
- ◆ Snow
- ◆ Wind
- ◆ Fire Proof
- ◆ Earthquake Defense
- ◆ Ground Basic Pressure
- ◆ Logistic Access

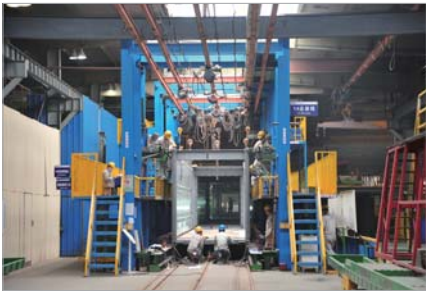
R&D Organization Framework

- ◆ TLS owns and operates the provincial certified R&D center staffed with more than 120 engineers with a focus on standard product improvement and new product customized design.



Production Line

- ◆ TLS operates full sets of self-contained production lines: raw material treatment, parts cutting, punching and welding, general assembly, painting, decoration [for modular units]. Total manufacturing area of more than 90,000, annual capacity: 10,000 special containers / 20,000 modular units.

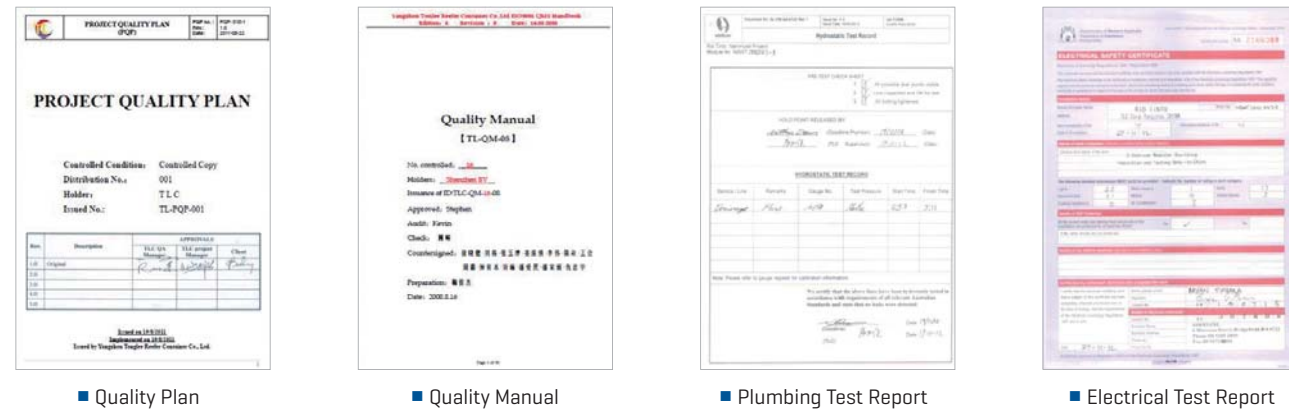


Quality Control

◆ TLS focuses on strict and stable quality control and operates whole production course inspection platform and equipment for:

- Structure test
- Wind & snow loading test
- Thermal test
- Acoustic test
- Water tightness test
- Electrical test
- Plumbing test
- Air quality test
- Painting test

All test results are recorded and compiled into a comprehensive quality report



Safety

- ◆ Comply with the national laws, regulations, standards and other requirements related to the safety manufacture.
- ◆ Concentrate on the safety working site development of equipments and facilities.
- ◆ Continuous improve the working environment.
- ◆ Prevent the contamination and security accident.
- ◆ People first.
- ◆ Deepening the consciousness of full employee participation by the continuous OHSAS18001 safety management system activity.



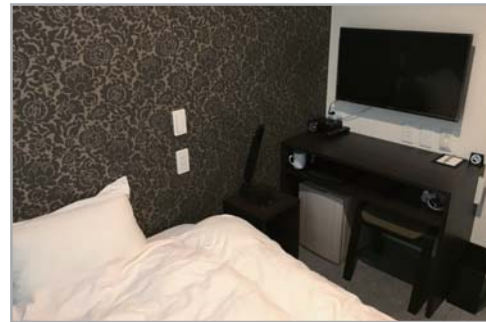
◆ Apartment



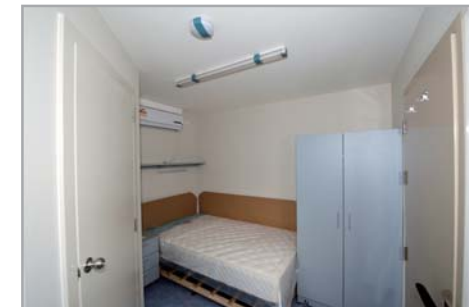
◆ Hotel



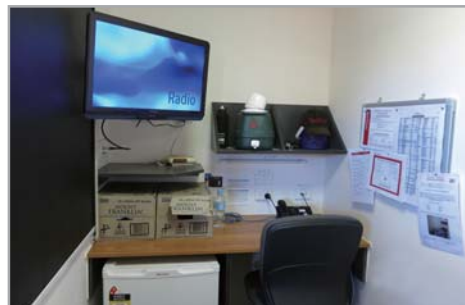
◆ Hotel



◆ Iron Ore Mining Camp



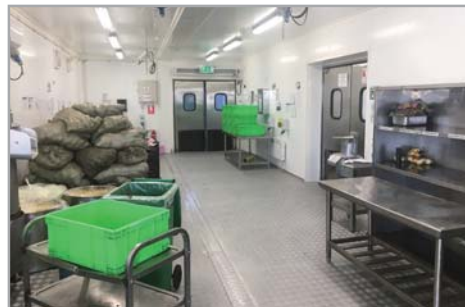
◆ Iron Ore Mining Camp



◆ Copper Mine Office Building



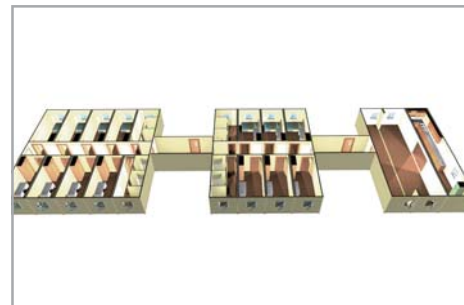
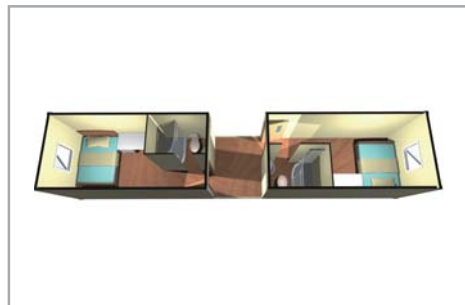
◆ Kitchen & Cold Storage



◆ Rig Drilling Camp



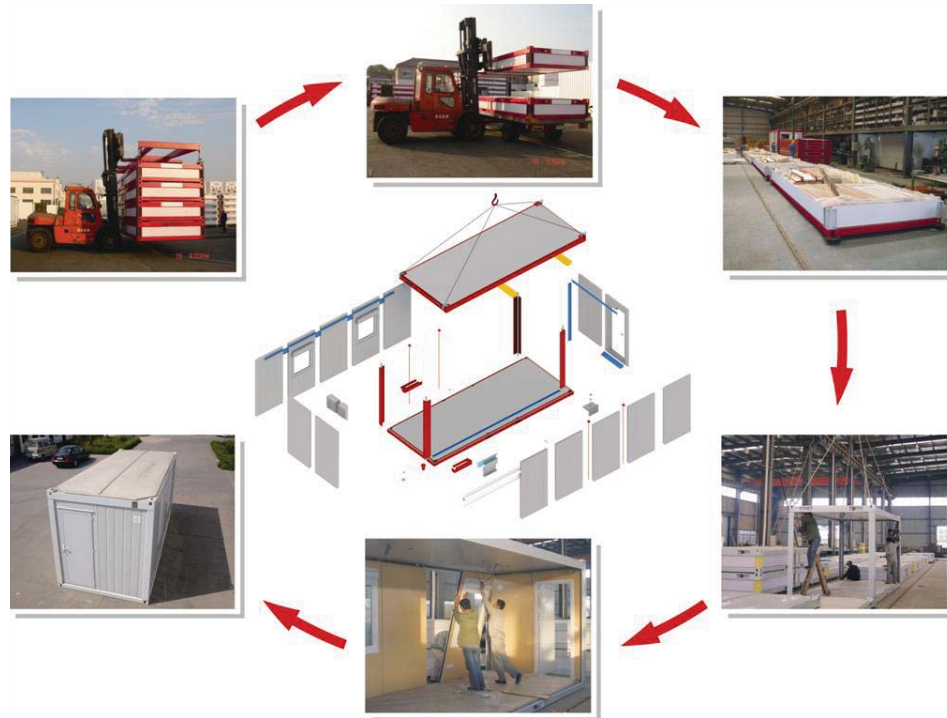
◆ Gold Mining Camp



◆ Science & Investigation Station



◆ School



◆ UN Peace Keeping Camp



◆ Leisure & Resort Building



◆ Construction Site Building

