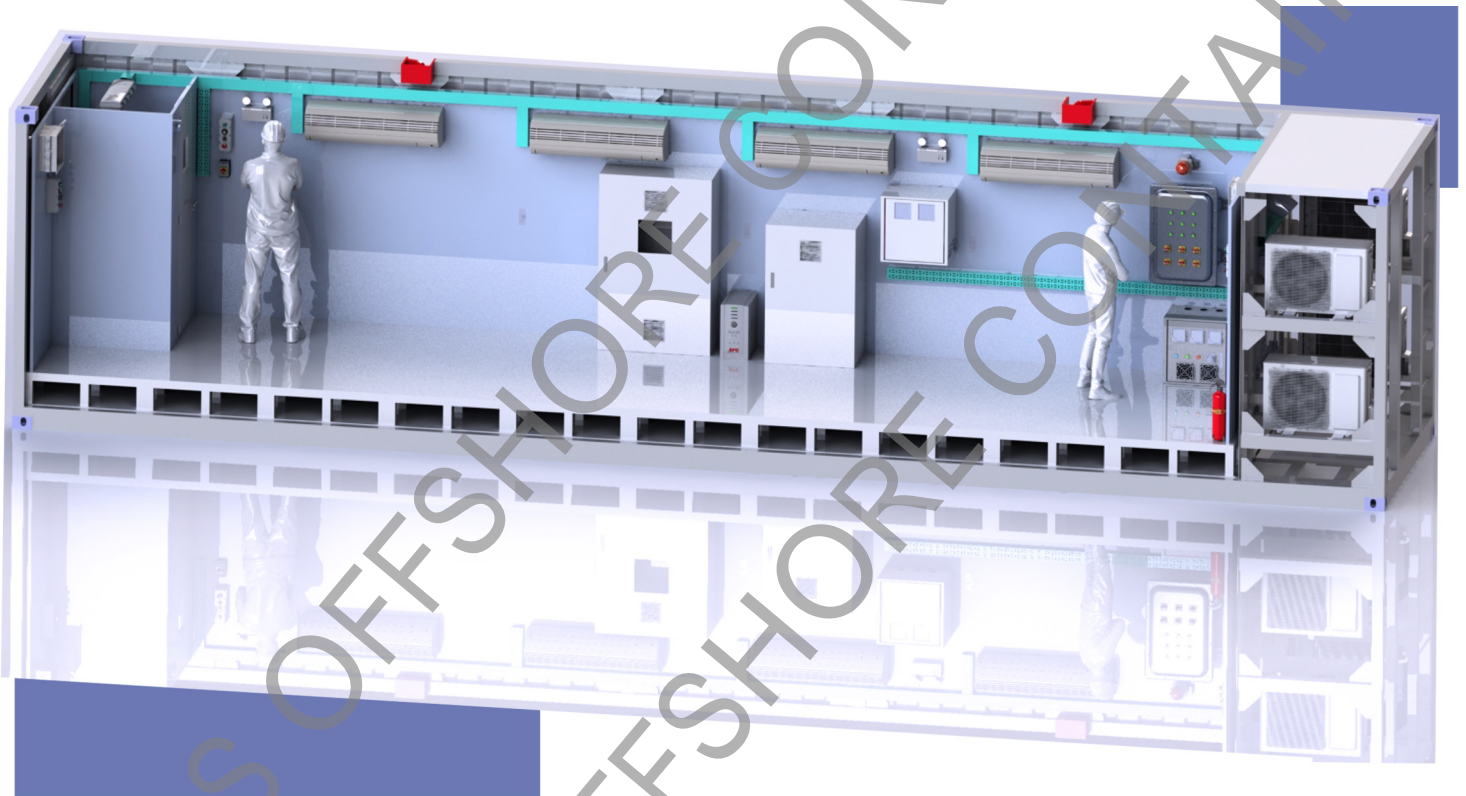


A global leading supplier of containerised solutions

**TLS**

# MCC/Switchgear/MCP/VFD/VSD Pressurised Shelter Solution



Wherever you are in the world TLS can help you, contact us.

Head Office

Singapore

73 Ubi Road 1, Oxley Bizhub, Singapore

E-mail: [sales@tls-containers.com](mailto:sales@tls-containers.com)

China

198 Wuzhou east road, Yangzhou, China

Hotline: +65-89601885;





TLS switchgear, MCC (motor control centre), MCP (motor circuit protection), VFD (variable frequency driver), VSD (variable speed driver) pressurised shelters are built from the containerized module to protect electronic controls and switch-gear safe from harsh climate, and the gas hazardous atmosphere, especially when the equipment is non explosion proof.

The shelter solution will have the equipment (switchgear, MCC, MCP, etc) enclosed in a weather resistant container with the entrance door for walk-in operation. Modular and flexible design make the shelter available to diverse requirements about the equipment, and the site installation. Standard or customized ISO standard or DNV2.7-1 standard container, sea worthy packing, easily transported by road and sea, to provide better support to overseas customers.

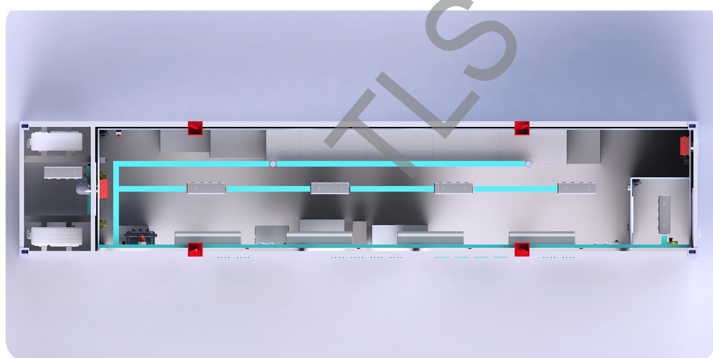
## Customized solution

Shelter module for customized design, based on Integration of the electrical equipment in shipping containers.

### Regular module size:

- 15ft: 4572\*2438\*2591/2896mm;
- 20ft: 6058\*2438\*2591/2896mm;
- 40ft: 12096\*2438\*2591/2896mm.

Other special size available to create shelter rooms for different equipment.

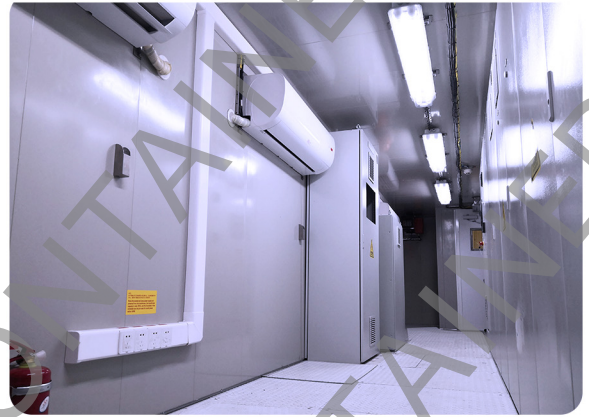


## Application

- MV/LV switch gear in fixed, compartmentalized and withdraw-able units;
- Control panel including:PLC, MCC, remote operation and monitoring, etc;
- Auxiliary equipment;
- Etc.

## Features

- A60 passive fire protection;
- Hazardous area rated: ZONE2/ZONE1 or Safe area;
- IEC60079-13 standard complied;
- DNV2.7-1/EN12079 structural design code;
- Combined pressurisation fire &gas panel;
- Fire detection;
- Gas Detection;
- Automatic fire dampers ( fail-safe );
- HVAC system;
- Basic electrical cabling;
- Lighting and sockets;
- Fire extinguisher;
- Escape hatch;
- Air-lock door system;



## Advantages

- One way solution provided by TLS, from design to fabrication;
- ZONE2/ZONE1, and safe area available;
- Containerized module, equipped with ISO corner and pad-eyes,suitable for onshore and offshore loading & unloading;
- Easy plugin connection, with detailed onsite installation guidance;

